

Impact of a Modified Discharge Program on Health-related Quality of Life Following Coronary Artery Bypass Grafting: A Randomized Controlled Trial



Hayat S. Abu Shaikha¹, Jafar A. Alshraideh², Mariam Kawafha³ and Dua'a Al Maghaireh^{4,5,*}

¹Faculty of Nursing, Al. Balqa'a Applied University, As-Salt, Jordan

²School of Nursing, The University of Jordan, Amman, Jordan

³Faculty of Nursing, Yarmouk University, Irbid, Jordan

⁴Faculty of Nursing, Irbid National University, Saudi Arabia

⁵Faculty of Nursing, Suliman Al-Rajhi University, Saudi Arabia

Abstract:

Introduction: The patients of post-operative coronary artery bypass graft (CABG) often face complications impacting their health-related quality of life (HRQOL). Effective discharge planning can facilitate recovery and improve HRQOL. Therefore, the aim of this study was to evaluate the impact of a modified re-engineered discharge program on the HRQOL in patients 30 days after Coronary Artery Bypass Graft surgery.

Methods: A posttest-only randomized clinical trial with 104 CABG patients compared a modified project Re-Engineered Discharge (RED) program to standard procedures. The intervention group received specialized training, while the control group followed routine care. HRQOL was assessed 30 days post-discharge using the SF-36 scale. Chi-square and independent t-tests were used to perform statistical tests.

Results: Of 104 participants, 55 in the intervention and 49 in the control group completed the study. No statistically significant differences were found in overall HRQOL scores (M (SD) =49.93 (14.00) vs. M (SD) 47 (11.85) $P = .272$) or in subscales, such as physical functioning ($P = .818$), emotional health ($P = .155$), and pain ($P = .839$). Minor, non-significant subscale improvements were noted in the intervention group. Routine care and pain may have impacted program effectiveness.

Conclusion: The study emphasizes the complexities of embedding structured discharge programs within standard care, offering valuable insights into limitations in post-operative cardiac care.

Clinical Trial Registration No.: NCT04527822

Keywords: Re-engineered discharge, RED project, CABG, Quality of life, HRQoL, Training.

© 2025 The Author(s). Published by Bentham Open.

This is an open access article distributed under the terms of the Creative Commons Attribution 4.0 International Public License (CC-BY 4.0), a copy of which is available at: <https://creativecommons.org/licenses/by/4.0/legalcode>. This license permits unrestricted use, distribution, and reproduction in any medium, provided the original author and source are credited.

*Address correspondence to this author at the Department of Faculty of Nursing, Irbid National University, Saudi Arabia and Faculty of Nursing, Suliman Al-Rajhi University, Saudi Arabia; E-mail: dfm_2013@yahoo.com

Cite as: Abu Shaikha H, Alshraideh J, Kawafha M, Al Maghaireh D. Impact of a Modified Discharge Program on Health-related Quality of Life Following Coronary Artery Bypass Grafting: A Randomized Controlled Trial. Open Nurs J, 2025; 19: e18744346368558. <http://dx.doi.org/10.2174/0118744346368558250320043722>



CrossMark

Received: November 13, 2024

Revised: January 21, 2025

Accepted: January 24, 2025

Published: April 07, 2025



Send Orders for Reprints to
reprints@benthamscience.net

1. INTRODUCTION

In the first month post-CABG, patients commonly experience pain, sleep disturbances, dyspnea, anxiety, depression, gastrointestinal issues, dizziness, palpitations, appetite loss, and leg/foot swelling. Fatigue resulting from these symptoms hinders their ability to perform daily activities [1]. Additionally, lifestyle changes can increase irritability, anger, and anxiety, but discharge training and counseling can improve outcomes [2]. Furthermore, CABG patients with discharge planning and counseling showed faster recovery and improved quality of life [3]. Two studies showed significant quality-of-life improvements in CABG patients after in-hospital training and follow-up counseling [4, 5]. Insufficient knowledge at the time of discharge among Jordanian CABG patients has been identified as a risk factor that hinders self-care activities due to unmet educational needs [6]. Studies by Mosleh, Eshah [7], and Subeh and Salami [8] have highlighted this issue. Subeh and his colleague noted that the absence of structured discharge planning programs in two Jordanian hospitals led to patients reporting a lack of knowledge regarding complications management, self-care activities, medication issues, and diet [9]. Thorough discharge information and follow-up were shown to improve the post-operative management and HRQOL of patients, reducing failures and readmissions [10-12], reducing mortality, morbidity, and complications [13], and improving patient outcomes [14-16]. Project RED aims to reduce hospital readmissions through a series of structured steps led by a discharge advocate nurse [17]. Project RED has been studied for its effects on post-discharge outcomes, including hospital use, mortality, follow-up, patient preparedness, morbidity, patient experience, family involvement, and cost-saving. However, its impact on health-related quality of life remains unassessed. Post-CABG discharge planning, supported by a discharge educator, enhances recovery, understanding of care, communication, and follow-up [18-20]. Nurses play a pivotal role in the post-operative care of patients, particularly those recovering from complex surgical procedures, such as coronary artery bypass grafting (CABG) [8]. Their responsibilities encompass a range of critical tasks, including educating patients about self-care practices, monitoring for potential complications, managing pain effectively, and providing emotional and psychological support during the recovery process.

Additionally, nurses ensure adherence to discharge plans by reinforcing instructions on medication regimens, lifestyle modifications, and follow-up care [18-20]. These comprehensive nursing interventions are essential for optimizing recovery, enhancing health-related quality of life, and reducing the risk of readmissions, underscoring the significant impact of nursing care on postoperative outcomes [18-20]. Therefore, the purpose of the current study was to investigate the effect of implementing a modified discharge intervention based on the Project RED program on health-related quality of life among CABG patients 30 days after surgery.

2. MATERIALS AND METHODS

2.1. Study Design

A posttest-only Randomized Controlled Trial (RCT) design was used for this study.

2.2. Setting

The study was conducted at the largest specialized center for cardiovascular surgeries in Jordan.

2.3. Participants

The study included Jordanian adults who underwent first-time elective CABG surgery for single to triple CAD, met inclusion criteria (18+, Arabic-speaking, contactable, no history of aortic calcification or stroke, able to consent), and were discharged to home. Exclusion criteria covered mental disorders, combined cardiac procedures, cerebrovascular disease, TIA, significant carotid stenosis ($\geq 70\%$), emergency CABG, extended postoperative stays over 15 days, and in-hospital mortality.

2.4. Sampling Procedure

Single-center non-probability sampling was used to recruit the study participants. The sampling procedure adopted the block randomization method to select the patients. Blocked randomization could provide approximately equal groups of participants assigned to intervention and control groups [21]. Block of 2, 4, or 6 (according to the availability of the patients) was used each day to assign the patients to intervention and control groups. The researcher used the RAND function on an Excel sheet to assign a random number to each patient. Each day, one-half of the CABG patients were assigned to the intervention group and the other half to the control group. The order in which the intervention was assigned in each block was randomized, and this process was repeated for all consecutive blocks of participants (Fig. 1).

2.5. Sample Size

The sample size calculation aimed to achieve sufficient statistical power to detect group differences, thereby minimizing type II errors. Power analysis involved setting an alpha level (typically 0.05), estimating effect size, and determining the desired power (commonly 0.80) to ensure adequate sample size. Effect size estimation often uses pilot studies or previous research in nursing, where medium effect sizes are standard. For this study, sample size estimation employed the Chi-Square test and G*Power software. With an alpha of 0.05, a medium effect size (0.50), and a power of 0.80, 52 subjects per group were required, totaling 104. Anticipating a 30% dropout rate, 67 participants per group (totaling 134) were recruited to ensure adequate completion rates [22] (Fig. 2).

2.6. Instruments

The study used two questionnaires: patient demographic data and the SF-36 questionnaire.

2.6.1. Patient Demographic Data

Researchers developed a demographic questionnaire, collecting patient data via self-report and medical records.

Data included gender, age, education, admission date, social and employment status, chronic disease history, post-operative blood units, graft count, hospital and ICU stay, creatinine levels, aortic cross-clamp time, ventilation duration, ejection fraction, and stroke history [23-25].

2.6.2. SF-36 Questionnaire

The SF-36 scale assesses population health, disease burden, clinical outcomes, and treatment effects [26]. It is considered a golden standard for QOL assessment. It includes multi-item scales to measure the following eight dimensions: physical functioning (10 items), role limitations due to physical health problems (4 items), bodily pain (2 items), social functioning (2 items), general mental health (5 items), role limitations due to emotional problems (3 items), vitality, energy and fatigue (4 items), and general health perception (5 items). The eight subscales can be collated into two higher-order domains representing the physical and mental aspects of the QOL, referred to as a physical component summary and a mental component summary [27]. The eight domains can be clustered into two main domains: 'Physical Component Summary

(PCS) and 'Mental Component Summary (MCS) [28, 29]. The SF-36 was extensively used and validated among CABG patients [30, 31]. Moreover, the Arabic version of the scale is valid and reliable; Cronbach's alpha ranged between 0.71- 0.94 [28, 32]. The scores were calculated and transformed to a scale from 0-100, with a mean of 50 and a standard deviation of 10. The higher scores reflected better health [26]. The SF-36 scoring system was for the total score and each dimension separately, with zero being the worst and 100 the best possible score. The lowest scores indicate the lowest health state, which indicated a functional limitation, severe social and role disability, and distress.

2.7. Ethical Consideration

The study received ethical approval from the "Royal Medical Services Human Research Ethics Committee no.5/2020. Researchers informed patients about the objectives of the study, assured voluntary participation, and allowed withdrawal at any time. Oral and written consent was obtained from all participants before the study began.

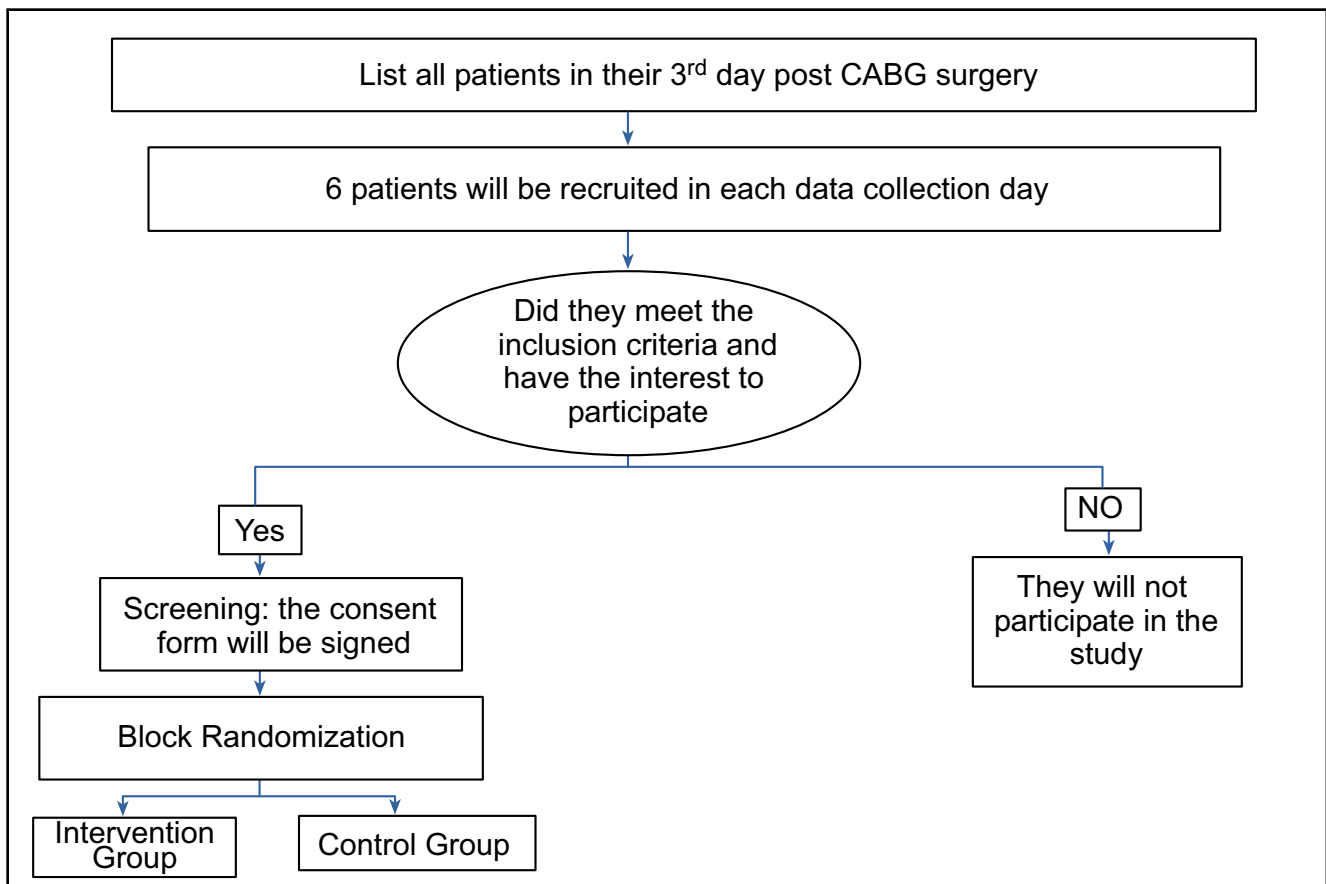


Fig. (1). Sampling procedure.

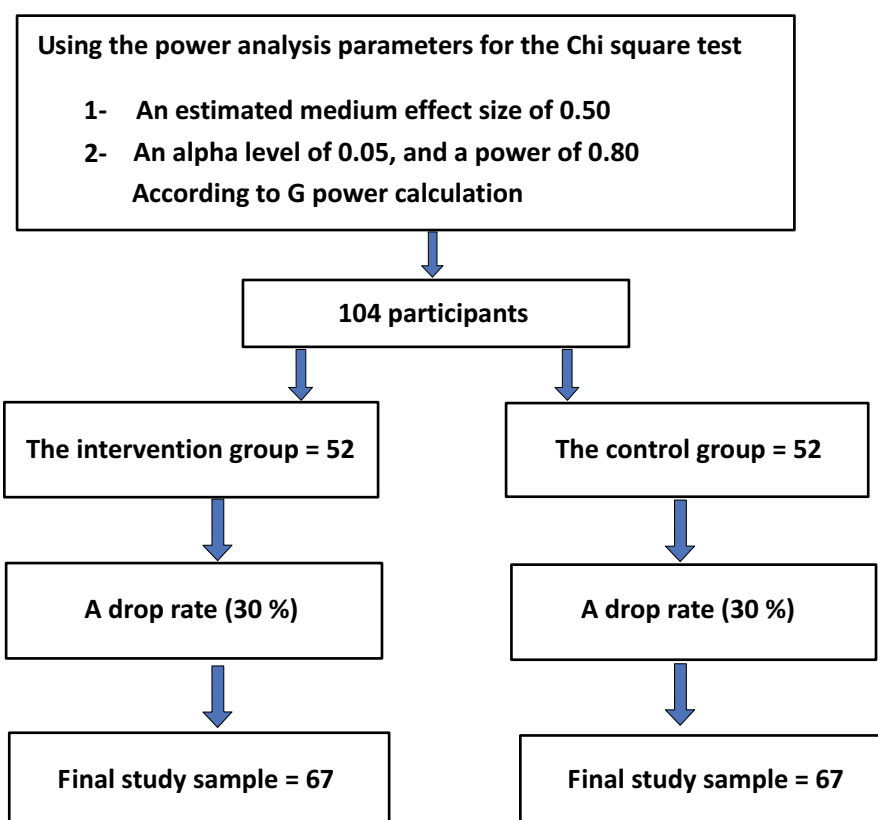


Fig. (2). Sample size calculation.

2.8. Data Collection

Data collection occurred from July 15 to October 30, 2020, delayed by COVID-19-related clinic closures and elective surgery postponements in Jordan. A total of 118 eligible CABG patients from QAH surgical floors were randomized into intervention ($n=59$) and control ($n=59$) groups. The intervention group received a modified Project-RED discharge plan, including an After-Hospital Care Plan (AHCP) with educational and medication guidance, plus a follow-up call. The control group received standard discharge care, including a summary, medications, clinic appointments, and verbal instructions. Health-related quality of life (HRQOL) was measured 30 days post-discharge using the SF-36 questionnaire. Researchers obtained IRB approval and informed consent, gathering baseline demographic and medical data pre-discharge (Figs. 3 and 4).

2.9. Intervention

Project RED is a standardized hospital-based program designed to provide patients and caregivers with the information they need to continue care at home (AHRQ, 2013). It has been demonstrated to reduce all-cause readmission (Adams *et al.*, 2014; Berkowitz *et al.*, 2013; Ceppa *et al.*, 2015; Jack *et al.*, 2009; S. E. Mitchell *et al.*, 2016), reduce all-cause mortality (Ceppa *et al.*, 2015; Patel and Dickerson, 2018), improve patient outcomes (Cancino *et al.*, 2017; Ceppa *et al.*, 2015; Jack *et al.*, 2009), and improve patient safety during care transitions (Ceppa *et al.*, 2015) [12, 13, 16, 17].

Project RED was proposed by a cardiologist at Boston Medical Center (BMC) in 2007 as a mechanism to reduce 30-day readmission (AHRQ, 2013). The team tabulated areas of critical weakness leading to readmission and formulated 12 steps to address these issues.

The proposed intervention in the current study, which is a modified project RED, will be used for the preparation of the patients for hospital discharge. Through the proposed intervention, patients will receive individualized education before discharge, all the medication will be reconciled, and the patients will be educated about it. A written educational booklet (after-hospital care plan [AHCP]) will be handed to the patients, specifying all patient appointments (details given regarding location, date, time, and name of the physician) and all the medication with a color-coded table to facilitate comprehension of the medicines regimen. Moreover, the AHCP will include the frequently experienced signs and symptoms, and the patients will receive a follow-up phone call within 72 hours after discharge.

2.9.1. After Hospital Care Plan

Following ethical approval and randomization, the DE prepared individualized After-Hospital Care Plans (AHCP) for intervention group patients, a core component of Project RED. AHCP preparation involved reviewing patient files, consulting with physicians, and meeting the patient and if needed, the clinical pharmacist. The AHCP ensured

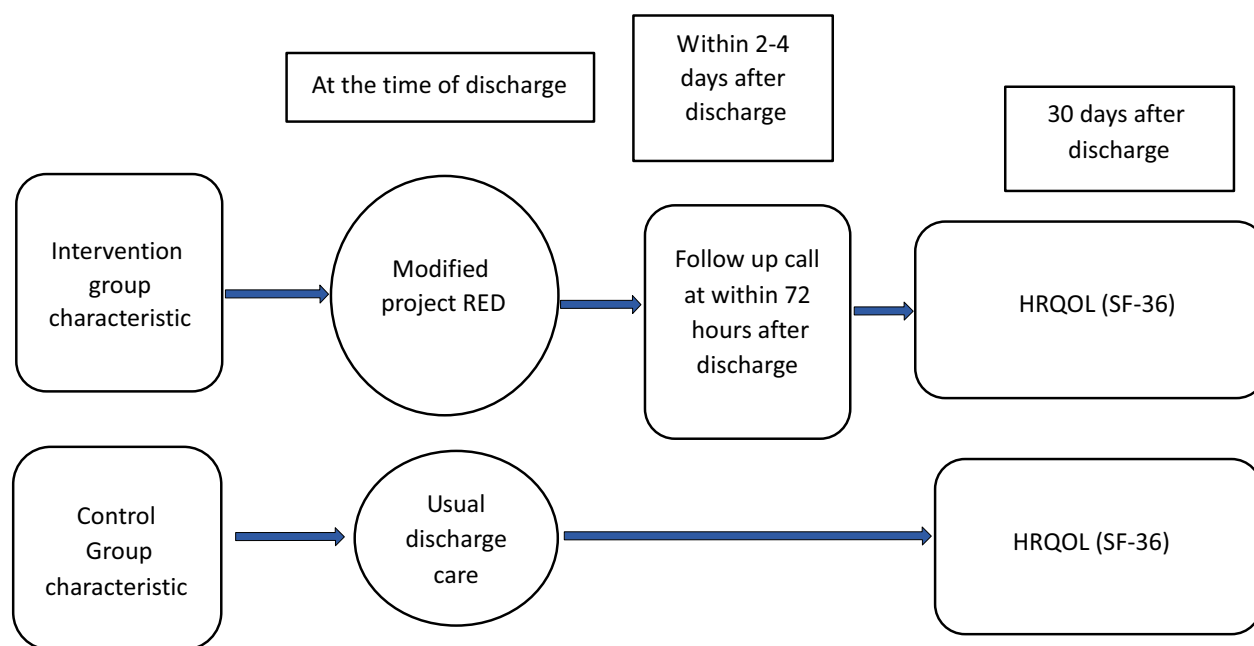


Fig. (3). Data collection procedure.

that the patients understood their diagnoses, surgical procedures, comorbidities, and treatment plans and included essential information, such as surgeon and pharmacy contact details, medication allergies, and follow-up call information. This comprehensive, patient-specific AHCP enhanced the understanding of care requirements post-discharge.

2.9.2. Post-discharge Follow-up Phone Call

In the intervention group, CABG patients received a follow-up call from the discharge educator (DE) within 2-4 days post-discharge. During the 20-30-minute call, the DE clarified discharge plans, assessed health status, reviewed medications, confirmed appointment details, and provided guidance on managing potential complications. Health assessments distinguished post-surgery effects from new concerns, with recommendations for non-urgent issues. Medication adherence and understanding were supported, and any non-adherence was addressed through education or consultations. Key information, including health status, medication management, and post-discharge instructions, was documented to aid the transition of patients to home care.

2.10. Analysis Strategy

Data were analyzed using IBM SPSS Statistics version 20, incorporating both descriptive and inferential statistical methods to evaluate the impact of the intervention on outcomes. Descriptive statistics, including frequency distributions, percentages, means, and standard deviations, were used to summarize demographic and clinical characteristics. Baseline characteristics were assessed for group homogeneity using independent t-tests for continuous

variables and Chi-square or Fisher's exact tests for categorical variables, ensuring comparability between groups. Levene's test was performed to verify homogeneity of variance, with the Mann-Whitney U test applied to non-normally distributed data or where variance assumptions were violated. The primary outcome, Health-Related Quality of Life (HRQOL) as measured by the SF-36, was analyzed to compare total scores and individual subscale scores between groups, employing independent t-tests for normally distributed data and non-parametric tests for distributions deviating from normality. Subscale scores were examined individually to explore specific quality-of-life dimensions impacted by the intervention. Missing data were managed through pairwise deletion to maximize the available dataset for analysis. Statistical significance was set at $p < 0.05$, and effect sizes were calculated to provide insight into the magnitude of observed differences.

2.10.1. Results

A total of 118 patients were randomized equally into intervention ($n=59$) and control ($n=59$) groups, with final samples of 55 and 49, respectively, due to follow-up losses. An independent t-test was used to assess group homogeneity across variables, including age, creatinine levels (pre- and post-operative), aortic cross-clamp time, ICU stay, and hospital stay. Age showed no significant differences between the intervention ($M=56.98$, $SD=8.06$) and control ($M=56.2$, $SD=8.937$) groups, and clinical variables were similar across both groups. Levene's test confirmed variance homogeneity, except for mechanical ventilation, where the Mann-Whitney test revealed a significant difference between groups (Table 1).

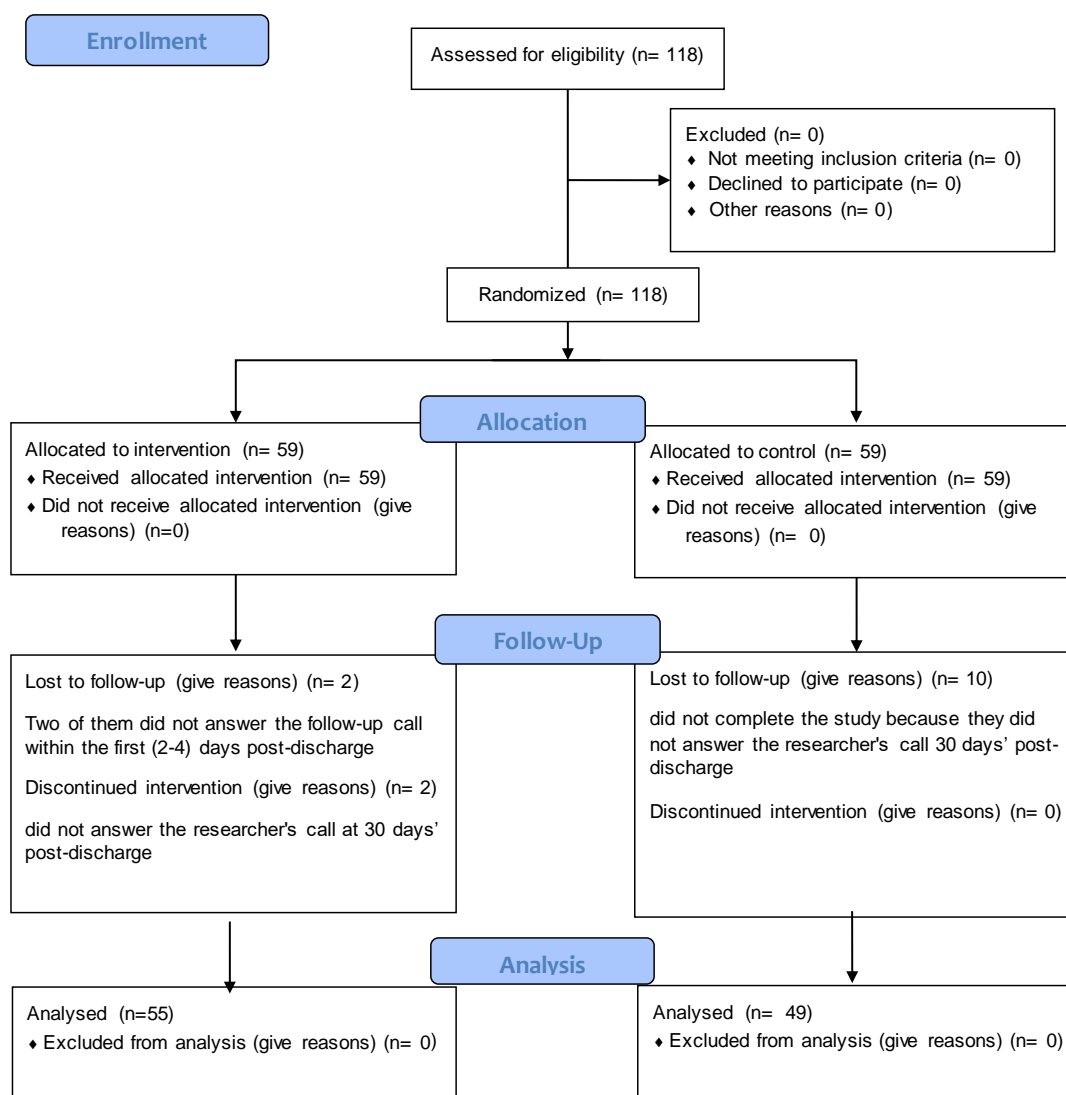


Fig. (4). Flow diagram.

Table 1. Group comparison of participant characteristics using t-tests and chi-square tests.

Continuous Variable	Intervention (n=55)		Control (n) =49		Test Name	p-value
-	M (SD)		M (SD)		-	-
Age	56.98 (8.066)		56.2(8.937)		Independent t-test	.642
Pre-operative creatinine	.8502(.2823)		.8918(.2264)			.412
Post-operative creatinine	.8253(.26316)		.8369(.221614)			.807
Aortic cross-clamp time	56.69(18.885)		54.39(15.334)			.500
ICU length of stay	2.13(1.292)		2.24(1.164)			.628
Hospital length of stay	7.67(2.381)		8.14(2.574)			.336
Duration of mechanical ventilation	-2.306				Mann-Whitney test	.021
Categorical Variable	Intervention		Control		-	p-value
-	Count	%	Count	%	-	-
Gender	-	-	-	-	Chi-square test	.787
Male	46	83.6%	40	81.6%	-	-
Female	9	16.4%	9	18.4%	-	-

(Table 1) contd....

Continuous Variable	Intervention (n=55)		Control (n) =49		Test Name	p-value
Education	-	-	-	-	Chi-square test	.967
Intermediate	25	45.5%	23	46.9%	-	-
Secondary	17	30.9%	14	28.6%	-	-
Collage/university	13	23.6%	12	24.5%	-	-
Social Status	-				Fisher exact test	.167
Married	48	87.3%	47	95.9%	-	-
Widow	7	12.7%	2	4.1%	-	-
Employment status	-	-	-	-	Chi-square test	.879
Employed	21	38.2%	18	38.7%	-	-
Not employed/retired	34	61.8%	31	63.3%	-	-
Dislipidemia	-	-	-	-	Chi-square test	.991
Yes	28	50.9%	25	51%	-	-
No	27	49.1%	24	49%	-	-
Diabetes	-	-	-	-	Chi-square test	.862
Yes	29	52.7%	25	51%	-	-
No	26	47.3%	24	49%	-	-
Hypertension	-	-	-	-	Chi-square test	.844
Yes	27	49.1%	25	51%	-	-
No	28	50.9%	24	49%	-	-
Ejection fraction	-	-	-	-	Chi-square test	.108
Normal	25	45.5%	30	61.2%	-	-
Abnormal	30	54.5%	19	38.8%	-	-
Experienced previous strokes	-	-	-	-	Fisher exact test	.341
Yes	1	1.8%	3	6.1%	-	-
No	54	98.2%	46	93.9%	-	-
Units of blood received post-operatively	2.281				Fisher exact test	.905
0 units	23	41.8%	20	40.8%	-	-
1 unit	23	41.8%	18	36.7%	-	-
2 units	4	7.3%	6	12.2%	-	-
3 units	3	5.5%	4	8.2%	-	-
4 units	1	1.8%	0	0%	-	-
5 units	1	1.8%	1	2%	-	-
Number of Grafts	3.172				Fisher exact test	.579
1 graft	1	1.8%	0	0%	-	-
2 grafts	7	12.7%	8	16.3%	-	-
3 grafts	22	40%	23	46.9%	-	-
4 grafts	25	45.5%	17	34.7%	-	-
5 grafts	0	0%	1	2%	-	-

Abbreviations: n: Sample, M: Mean, SD: Standard deviation, %: percentage.

The Chi-square test was used to compare categorical variables (gender, education, employment status, dyslipidemia, diabetes, hypertension, and ejection fraction) between intervention and control groups, with all assumptions met. For variables with expected cell frequencies under five (social status, previous strokes, graft count, and blood units received), the Fisher exact test was applied. Results indicated no significant differences between groups across all categorical variables. Additionally, all patients underwent on-pump CABG. A comparison of study groups is detailed in Table 1.

An independent t-test assessed mean differences in the total SF36 score and subscales between groups. Preliminary screening confirmed approximate normality, and Levene's test validated homogeneity of variance. No significant differences emerged in HRQOL total mean scores between intervention (M=49.93, SD=14.00) and control

groups (M=47, SD=11.85), ($t=-1.10$, $p=.27$), indicating similar quality of life levels across both groups. The details are provided in Table 2.

A comparison of HRQOL subscale scores between intervention and control groups included physical functioning, physical health limitations, emotional health limitations, energy/fatigue, emotional well-being, social functioning, pain, and general health. Preliminary screening confirmed approximate normality, except for physical function limitations and general health subscales, which were analyzed using the Mann-Whitney test. Levene's test validated homogeneity of variance for most subscales, allowing pooled variance t -tests, while a separate t -test version was applied for variables violating this assumption. Results indicated no significant differences in subscale means between groups, though the intervention group had slightly higher scores on two subscales (Table 2).

Table 2. Comparison between Intervention and control groups based on the quality of life N=104.

Quality of Life	Intervention (55)	Control (49)	Skewness	T	p-value ***
-	M (SD)	M (SD)	-	-	-
Total quality of life	49.93(14.007)	47(11.856)	0.050	-1.104	.272
QOL Subscales					
Physical functioning	38 (18.871)	37(19.012)	.199	-.230	.818
Limitations due to physical health	4.55(18.060)	2.04(8.595)	4.984	1328* (-.285) **	.776
Limitations due to emotional health	63.64(46.380)	50.34(48.171)	-.295	-1.433	.155
Energy/fatigue	56.82(18.963)	54.39(17.429)	-.471	-.678	.500
Emotional wellbeing	62.76(20.481)	65.31(17.727)	-.384	.673	.503
Social functioning	48.86(23.108)	47.19(17.542)	-.426	-.418	.677
pain	41.18(18.763)	40.51(14.179)	.050	-.204	.839
General health	83.64(15.500)	79.90(16.024)	-1.169	1129* (-1.434) **	.152

Note: M: Mean, SD: Standard deviation, t: independent t-test result, (*) Mann-Whitney U, (**) Z score-standardized test statistics, p-value (***) is significant at $\alpha=0.05$.

3. DISCUSSION

This study assessed the impact of a modified Re-Engineered Discharge (RED) intervention on HRQOL 30 days post-CABG among Jordanian patients using a posttest randomized controlled design. A total of 104 patients (88%) completed the study [33]. Coronary artery bypass graft surgery involves a prolonged recovery, potentially impacting quality of life. Although substantial research exists on quality of life post-CABG, studies specifically examining the effects of discharge education and counseling on quality of life outcomes are limited [34, 35]. The results of the current study showed that the mean score for the total HRQOL SF36 scale was 49.93 (14.00) for the intervention group and 47.00 (11.85) for the control group, with a p-value of 0.27. The findings revealed a nonsignificant difference between both groups post-intervention. Akbari and Celik [34] investigated the effect of discharge training and post-discharge counseling on QOL among CABG patients. In this study, 100 patients were non-randomly assigned to intervention and control groups. The intervention included three training sessions, starting from admission, and provided in-hospital support with an educational booklet, discharge plan, and group counseling. Post-discharge support involved home visits and follow-up calls at 2, 10, and 6 weeks. Teaching methods comprised lectures, demonstrations, Q&A, and feedback. Post-discharge counseling addressed individualized needs and problem management. Six weeks post-discharge, SF-36 assessments showed significantly higher quality of life scores in the intervention group (93.19) than in the control group (47.00) [34]. The current study was inconsistent with a previous study [34]. The differences in results may stem from study design and intervention methods. In this study, patients were randomly assigned and received a single, one-on-one educational session post-operatively, with a written discharge plan but no comprehensive educational booklet. In contrast, the referenced study used a non-random assignment and provided an educational booklet covering the surgical procedure, care topics, complications, and post-CABG acti-

vities [34]. Moreover, the follow-up was limited to one follow-up call 2-4 days post-discharge without home visits compared to frequent telephone calls and home visits done by Akbari and Celik [34].

4. IMPLICATIONS FOR PRACTICE

Nurses are essential in post-surgery patient support, providing interventions that enhance recovery and reduce readmissions [36]. Interventions like discharge planning, education, home visits, follow-up calls, telehealth, and skilled nursing transitions reduce readmission rates [37]. The primary goal of these nursing interventions is to decrease mortality rates, prevent hospital readmissions, and enhance patient outcomes in CABG patients [38]. Effective discharge planning is essential for patients for their smooth transition home, addressing immediate and long-term care needs and ensuring continuity. In Jordan, it includes medication education, lifestyle advice (e.g., smoking cessation, diet), blood sugar/blood pressure management, and scheduling a follow-up within two weeks post-discharge.

5. LIMITATIONS AND STRENGTHS OF THE STUDY

The strengths of this study lie in its robust RCT design and fulfillment of all criteria for testing hypotheses, with block randomization minimizing investigator bias. However, limitations include potential investigator bias, as a single researcher conducted all study procedures. Additionally, the discharge summary transfer was constrained by hospital guidelines, and the small sample size may limit representativeness. Furthermore, the short duration (four months) of the study also restricts long-term outcome evaluation, limiting the findings to immediate post-intervention effects.

CONCLUSION

This study explored how a modified Re-Engineered Discharge (RED) intervention affects the quality of life for Jordanian patients after CABG surgery. The results showed no significant difference between the intervention and control groups, suggesting that a single educational session and minimal follow-up may not be enough to improve post-surgery outcomes. Previous studies with more comprehen-

sive discharge education and follow-up support have shown better results, highlighting the importance of ongoing patient engagement. Nurses play a crucial role in ensuring a smooth transition from hospital to home, and effective discharge planning can make a real difference in recovery. While this study had strengths, such as its rigorous randomized design, limitations like a small sample size and short follow-up period suggest that more research is needed to develop stronger, long-term support strategies for post-CABG patients.

AUTHORS' CONTRIBUTIONS

The authors confirm their contribution to the paper as follows: H.S.A.: Study conception and design; J.A.A.: Investigation; D.A.M. and M.K.: Draft manuscript. All authors reviewed the results and approved the final version of the manuscript.

LIST OF ABBREVIATIONS

CABG	=	Coronary Artery Bypass Grafting
RCT	=	Randomized Controlled Trial
AHCP	=	After-Hospital Care Plans
DE	=	Discharge Educator
HRQOL	=	Health-Related Quality of Life
RED	=	Re-Engineered Discharge

ETHICS APPROVAL AND CONSENT TO PARTICIPATE

The study received ethical approval from the " Royal Medical Services Human Research Ethics Committee no.5/2020.

HUMAN AND ANIMAL RIGHTS

All human research procedures followed were in accordance with the ethical standards of the committee responsible for human experimentation (institutional and national), and with the Helsinki Declaration of 1975, as revised in 2013.

CONSENT FOR PUBLICATION

Oral and written consent was obtained from all participants before the study began.

STANDARDS OF REPORTING

CONSORT guidelines were followed.

AVAILABILITY OF DATA AND MATERIALS

The data supporting the findings of the article will be available from the corresponding author [D.A.M] upon reasonable request.

FUNDING

None.

CONFLICT OF INTEREST

The authors declare no conflict of interest, financial or otherwise.

ACKNOWLEDGEMENTS

Declared none.

REFERENCES

- [1] Li L, Piao JJ, Shang Z. Fatigue and physical activity in post-CABG patients: The parallel mediation model of kinesiophobia and self-efficacy : A prospective multicentre and cross-sectional study in China. *BMJ Open* 2024; 14(6): e082576. <http://dx.doi.org/10.1136/bmjopen-2023-082576> PMID: 38951011
- [2] Neicy Khongsai N, Khongsai L. A study to assess the effectiveness of self instructional module on knowledge regarding lifestyle modifications among post-operative coronary artery bypass graft patients at selected hospital, Secunderabad, Telangana. *IJANM* 2023; 11(1): 26-30. <http://dx.doi.org/10.52711/2454-2652.2023.00006>
- [3] Emamzadehashemi KR, Khanghah AG, Azizi A, Paryad E, Noveiri MJS. Quality of life and activities of daily living one year after Coronary Artery Bypass Graft (CABG) surgery: A cross-sectional study. *J Cardiothorac Surg* 2024; 19(1): 367. <http://dx.doi.org/10.1186/s13019-024-02848-y> PMID: 38915074
- [4] Guan H, Hang C, Zhang M, Yuan L-Y, Ding Y. Effect of individualized cardiac rehabilitation on cardiac function, time consumption, and quality of life in patients after CABG. *Heart Surg Forum* 2023; 26(1): E074-80. <http://dx.doi.org/10.1532/hcf.5249>
- [5] Yildiz E, Yildiz Z, Dayapoğlu N. Investigation of quality of life after coronary artery bypass surgery: A 10-year long-term follow-up study. *Innov Nurs Health Sci* 2023; 1(8): 27.
- [6] Alrahahleh M, Subih M, Megdadi R, *et al.* Cardiac rehabilitation program effect on health-related quality of life among patients with coronary artery bypass grafts. *Crit Care Nurs Q* 2024; 47(1): 19-28. <http://dx.doi.org/10.1097/CNQ.0000000000000488> PMID: 38031305
- [7] Mosleh SM, Eshah NF, Darawad M. Percutaneous coronary intervention and heart surgery learning needs of patients in Jordan. *Int Nurs Rev* 2016; 63(4): 562-71. <http://dx.doi.org/10.1111/inr.12318> PMID: 27653173
- [8] Subeh MM, Salami I, Saleh MY. Most frequent and severe symptoms and learning needs among CABG patients. *Int J Nurs* 2014; 1: 10.15640. <http://dx.doi.org/10.15640/ijn.v1n2a13>
- [9] Karaoglan Yilmaz FG, Ustun AB, Zhang K, Yilmaz R. Smartphone addiction, nomophobia, depression, and social appearance anxiety among college students: A correlational study. *J Ration-Emot Cogn-Behav Ther* 2024; 42(2): 305-21. <http://dx.doi.org/10.1007/s10942-023-00516-z>
- [10] Mitchell SE, Martin J, Holmes S, *et al.* How hospitals reengineer their discharge processes to reduce readmissions. *J Healthc Qual* 2016; 38(2): 116-26. <http://dx.doi.org/10.1097/JHQ.0000000000000005> PMID: 26042743
- [11] Mitchell SE, Weigel GM, Laurens V, Martin J, Jack BW. Implementation and adaptation of the Re-Engineered Discharge (RED) in five California hospitals: A qualitative research study. *BMC Health Serv Res* 2017; 17(1): 291. <http://dx.doi.org/10.1186/s12913-017-2242-z> PMID: 28424074
- [12] Patel PH, Dickerson KW. Impact of the implementation of project re-engineered discharge for heart failure patients at a Veterans Affairs Hospital at the Central Arkansas Veterans Healthcare System. *Hosp Pharm* 2018; 53(4): 266-71. <http://dx.doi.org/10.1177/0018578717749925> PMID: 30038447
- [13] Ceppa EP, Pitt HA, Nakeeb A, *et al.* Reducing readmissions after pancreatectomy: Limiting complications and coordinating the care continuum. *J Am Coll Surg* 2015; 221(3): 708-16. <http://dx.doi.org/10.1016/j.jamcollsurg.2015.05.012> PMID: 26228016
- [14] Adams CJ, Stephens K, Whiteman K, Kersteen H, Katruska J.

- Implementation of the Re-Engineered Discharge (RED) toolkit to decrease all-cause readmission rates at a rural community hospital. *Qual Manag Health Care* 2014; 23(3): 169-77.
<http://dx.doi.org/10.1097/QMH.0000000000000032> PMID: 24978166
- [15] Berkowitz RE, Fang Z, Helfand BK, Jones RN, Schreiber R, Paasche-Orlow MK. Project ReEngineered Discharge (RED) lowers hospital readmissions of patients discharged from a skilled nursing facility. *J Am Med Dir Assoc* 2013; 14(10): 736-40.
<http://dx.doi.org/10.1016/j.jamda.2013.03.004> PMID: 23608528
 - [16] Cancino RS, Manasseh C, Kwong L, Mitchell SE, Martin J, Jack BW. Project RED impacts patient experience. *J Patient Exp* 2017; 4(4): 185-90.
<http://dx.doi.org/10.1177/2374373517714454> PMID: 29276765
 - [17] Jack BW, Chetty VK, Anthony D, et al. A reengineered hospital discharge program to decrease rehospitalization: A randomized trial. *Ann Intern Med* 2009; 150(3): 178-87.
<http://dx.doi.org/10.7326/0003-4819-150-3-200902030-00007> PMID: 19189907
 - [18] Fashola A. The effects of utilizing post-discharge components of Project Re-Engineered Discharge (RED) in the reduction of readmission rate in older adults with congestive heart failure. University of Massachusetts Global 2023.
 - [19] Jack B, Greenwald J, Forsythe S, et al. Developing the tools to administer a comprehensive hospital discharge program: The ReEngineered Discharge (RED) program. *Advances in Patient Safety: New Directions and Alternative Approaches*. Rockville (MD): Agency for Healthcare Research and Quality 2008.
 - [20] Mitchell K, Chen H-S. The use of the Re-Engineered Discharge (RED) Toolkit on patients undergoing a hip or knee joint replacement or revision. Thesis, The University of Toledo 2019.
 - [21] Friedman LM, Furberg CR, DeMets DL, et al. *Fundamentals of clinical trials*. Springer 2010.
<http://dx.doi.org/10.1007/978-1-4419-1586-3>
 - [22] Polit DF, Beck CT. *Nursing research: Generating and assessing evidence for nursing practice*. Lippincott Williams & Wilkins 2008.
 - [23] Khand TU, Khand F, Kandhro AH, et al. Demographic, dietary and biochemical risk factors associated with the causation of goiter in plane areas of Sindh province. *Liaquat Medical Res J* 2019; 1(1): 5-8.
<http://dx.doi.org/10.38106/LMRJ.2019.1.1-02>
 - [24] Mehta RH, Grab JD, O'Brien SM, et al. Clinical characteristics and in-hospital outcomes of patients with cardiogenic shock undergoing coronary artery bypass surgery: Insights from the society of thoracic surgeons national cardiac database. *Circulation* 2008; 117(7): 876-85.
<http://dx.doi.org/10.1161/CIRCULATIONAHA.107.728147> PMID: 18250266
 - [25] Alsaeed AH, Hersi A, Kashour T, et al. Characteristics and predictors of out-of-hospital cardiac arrest in young adults hospitalized with acute coronary syndrome: A retrospective cohort study of 30,000 patients in the Gulf region. *PLoS One* 2023; 18(5): e0286084.
<http://dx.doi.org/10.1371/journal.pone.0286084> PMID: 37228068
 - [26] Ware JE Jr. SF-36 health survey update. *Spine* 2000; 25(24): 3130-9.
<http://dx.doi.org/10.1097/00007632-200012150-00008> PMID: 11124729
 - [27] Tully PJ. Quality-of-Life measures for cardiac surgery practice and research: A review and primer. *J Extra Corpor Technol* 2013; 45(1): 8-15.
<http://dx.doi.org/10.1051/ject/201345008> PMID: 23691778
 - [28] AbuRuz M. Anxiety and depression predicted quality of life among patients with heart failure. *J Multidiscip Healthc* 2018; 11: 367-73.
<http://dx.doi.org/10.2147/JMDH.S170327> PMID: 30104881
 - [29] Matalqah LM, Radaideh KMR, Khatatbeh MM, Omari OA. Factor associated with health-related quality of life among population in Northern Jordan. *Epidemiol Biostat Public Health* 2022; 15(1)
<http://dx.doi.org/10.2427/12680>
 - [30] Deutsch MA, Krane M, Schneider L, et al. Health-related quality of life and functional outcome in cardiac surgical patients aged 80 years and older: A prospective single center study. *J Card Surg* 2014; 29(1): 14-21.
<http://dx.doi.org/10.1111/jocs.12233> PMID: 24147730
 - [31] Lavdaniti M, Hanlon P, Smith LN, et al. Assessment of health status using SF-36 six months after coronary artery bypass grafting: A questionnaire survey. *Health Sci J* 2015; 9(1): 1.
 - [32] Coons SJ, Alabdulmohsin SA, Draugalis JR, Hays RD. Reliability of an Arabic version of the RAND-36 Health Survey and its equivalence to the US-English version. *Med Care* 1998; 36(3): 428-32.
<http://dx.doi.org/10.1097/00005650-199803000-00018> PMID: 9520966
 - [33] Aaronson NK. Quality of life assessment in clinical trials: Methodologic issues. *Control Clin Trials* 1990; 10(4): 195S-208S.
 - [34] Akbari M, Celik S. The effects of discharge training and postdischarge counseling on quality of life after coronary artery bypass graft surgery. *Nurs Midwifery Stud* 2018; 7(3): 105-10.
http://dx.doi.org/10.4103/nms.nms_2_18
 - [35] Bikmoradi A, Masmouei B, Ghomeisi M, Roshanaei G, Masiello I. Impact of telephone counseling on the quality of life of patients discharged after coronary artery bypass grafts. *Patient Educ Couns* 2017; 100(12): 2290-6.
<http://dx.doi.org/10.1016/j.pec.2017.06.010> PMID: 28625860
 - [36] Al-Maskari A, Al-Noumani H, Al-Maskari M. Patients' and nurses' demographics and perceived learning needs post-coronary artery bypass graft. *Clin Nurs Res* 2021; 30(8): 1263-70.
<http://dx.doi.org/10.1177/1054773821990266> PMID: 33491488
 - [37] Mohamed Elesawy F, Ramadan Abouzied W, Dahi Mohamed Ahmed R, Hemed Hamad A. Effect of implementing discharge plan on patient's outcomes post coronary artery bypass graft surgery. *Egyptian Journal of Health Care* 2019; 10(3): 517-34.
<http://dx.doi.org/10.21608/ejhc.2019.252377>
 - [38] Han E, Quek RYC, Tan SM, et al. The role of community-based nursing interventions in improving outcomes for individuals with cardiovascular disease: A systematic review. *Int J Nurs Stud* 2019; 100: 103415.
<http://dx.doi.org/10.1016/j.ijnurstu.2019.103415> PMID: 31670215